

CFN 180711527
SLM 15.26, 36"
SEE SHEET 231

CFN 180711528
SLM 15.26, 36"
CONSTRUCTED
UNDER CUY-71-14.16

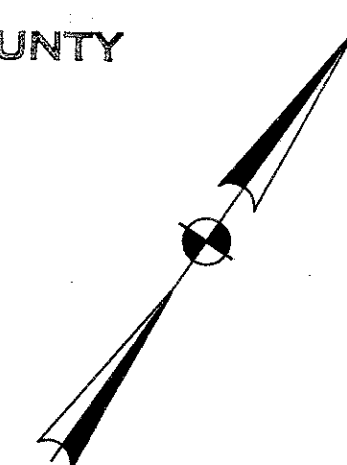
CURVE DATA
CURVE NO. 9
P.I. STA. 881+38.53
 $\Delta = 54^{\circ}52'24"$ LT
 $\Delta c = 41^{\circ}22'24"$ LT
 $D = 04^{\circ}30'00"$
 $R = 1273.24'$
 $T = 480.78'$
 $L = 919.41'$
 $E = 87.25'$
SPIRAL NO. 9
 $Ls = 600.00'$
 $\theta = 13^{\circ}30'00"$
 $P = 11.76'$
 $K = 299.45'$
 $LT = 401.17'$
 $ST = 201.06'$

CURVE DATA
CURVE NO. 10
P.I. STA. 890+73.61
 $\Delta = 12^{\circ}31'36"$ LT
 $D = 01^{\circ}16'00"$
 $R = 4523.35'$
 $T = 496.45'$
 $L = 988.95'$
 $E = 27.10'$

FED. RD. DIVISION	STATE	PROJECT
2	OHIO	

CUYAHOGA COUNTY
CUY-71-15.06

30

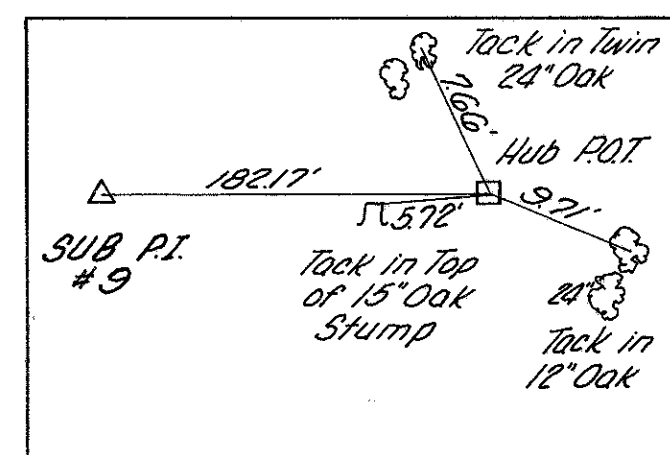
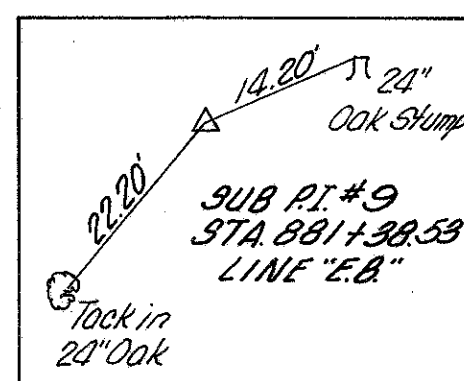


DESCRIPTION	PLATTED	IN	CHECKS
TOPOGRAPHY	BY	DATE	BY
PLAN	BY	DATE	BY
DRAINAGE	BY	DATE	BY
QUANTITIES	BY	DATE	BY

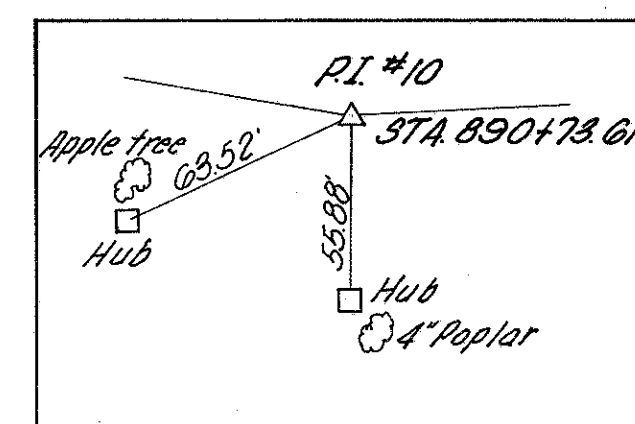
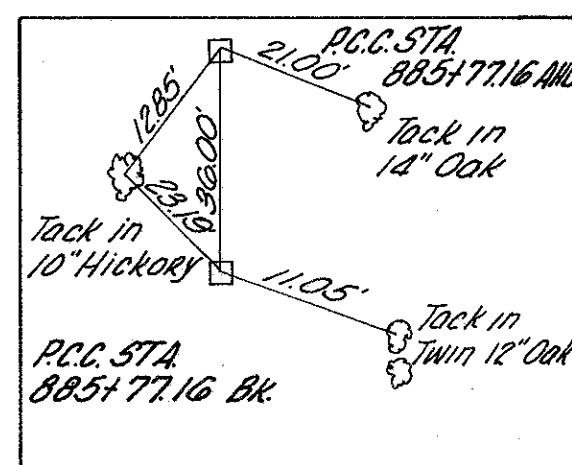
FOR DRAINAGE PROFILES
SEE SHEET NO. 44

FOR ESTIMATED QUANTITIES
SEE SHEET NO. 40

FOR PROFILE
SEE SHEET NO. 44



N 69.500
E 74.000



LINE 'E.B.' STA 880+00 TO STA 895+00